

TECHNIQUE CARD CALAMUS® FLOW

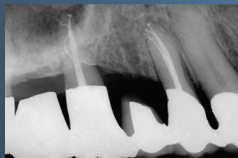
The Calamus Dual Obturation System combines a Calamus Pack handpiece for downpacking with the Calamus Flow handpiece for backpacking.



The Calamus Flow handpiece is utilized in conjunction with a gutta percha cartridge and canula to dispense thermosoftened gutta percha and "backpack" the canal.

Cartridge & Plugger Selection

- One-piece gutta percha cartridges contain gutta percha and an integrated canula.
- Cartridges are single patient use and are available in 20 and 23 gauge sizes.
- The Calamus Flow and Calamus Dual obturation systems provide a “bending tool” that may be utilized to place a smooth curvature on the canula.
- When necessary, select a smaller size manual plugger that will work passively to within 5 mm of the canal terminus, a medium size manual plugger that will work passively in the middle 1/3 of the canal, and a larger size manual plugger that will work passively in the coronal 1/3 of the canal.



CALAMUS® FLOW TECHNIQUE CARD

Backpack Technique*

- Adjust the unit temperature to 180°C with a flow rate percent of 80. Settings may vary depending on the gutta percha type utilized.
- Briefly position the tip of the warm canula against the previously downpacked gutta percha to re-thermosoften the most coronal aspect of this material. Dispensing thermosoftened gutta percha in this manner encourages cohesion while discouraging voids.
- Press the activation cuff on the Calamus Flow handpiece and dispense a small 2 to 3 mm segment of warm gutta percha into this region of the canal. When syringing thermosoftened gutta percha into the canal, hold the handpiece lightly so it will “back out” of the canal.
- Select the smaller size, prefit manual plugger and step its working end circumferentially around the walls of the canal using short, firm strokes. Firmly press against this flattened material for 5 seconds to compact warm gutta percha into this region of the canal.
- Position the tip of the warm canula against the previously packed filling material for 3 seconds. Press the activation cuff on the handpiece and dispense a little longer, 3 to 4 mm, segment of warm gutta percha into this region of the canal.
- Select the medium size, prefit manual plugger and step its working end circumferentially around the canal using short, firm strokes. Firmly press for 5 seconds to three-dimensionally compact warm gutta percha into this region of the canal.
- Continue the backfilling technique, in the manner described, until the canal is filled to the level of crestal bone or stop at any point to accommodate a post to facilitate the restorative needs.

* Please visit www.endoruddle.com to review the complete DFUs for the Vertical Condensation, Continuous Wave, and/or Hybrid downpack techniques.



See Directions For Use

ADVANCED  ENDODONTICS®

Clifford J. Ruddle DDS FACD FICD

(800) 753-3636 • (805) 964-8838 • www.endoruddle.com